

H-BEP-0030 Industrial RFID Portal

The Absolutely Resilient UHF RFID Portal

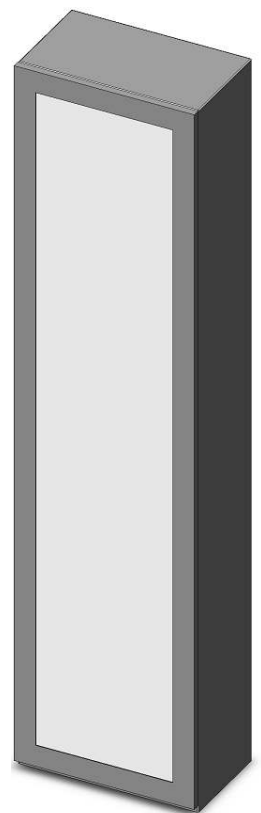
The H-BEP-0030 RFID Portal has been designed as a solution for dock-door applications in a single, highly rugged package. Its robust construction makes it suitable for rough industrial and warehouse environments, both indoors and outdoors

Description

The H-BEP-0030 houses an Alien ALR-8800 Gen 2 RFID Reader and 2 to 4 Alien antennas (depending on if it is single or double sided), which enables the continuous monitoring and recording of RFID enabled objects (e.g. boxes, pallets, etc), as they move in and out of a Distribution Center or Warehouse.

Fast & Easy Installation

Despite its robust and resilient indoor / outdoor design, the H-BEP-0030 is truly easy to install and maintain. The hermetically sealed (via secure locks) access door allows the maintenance personnel to open and service / install the portal within minutes. It also caters for unhindered, easy access to the reader and its antennas in order to readily retune and adjust their settings so as to achieve the desired RF footprint and operating performance.



Main Characteristics & Features

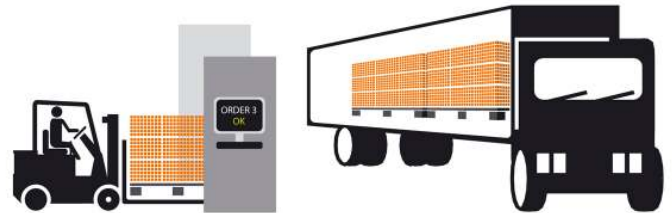
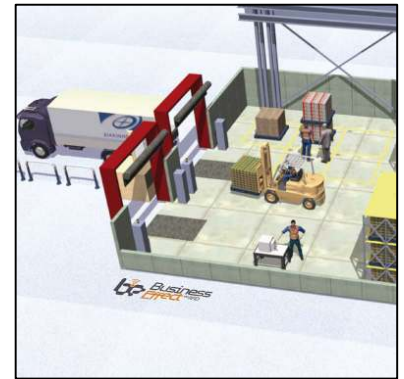
The H-BEP-0030 has been engineered to be totally integrated with the Alien ALR-8800 reader and the respective Alien Antennas. The internal antenna adjusting capabilities allow the installer to enhance and tune the RF field, thus making its footprint more specific and the portal easily adaptable to different conditions and applications.

- Robust and resilient construction - absolutely snow and rain proof
- Customizable dimensions to meet customer special requirements
- Fully functional, ready to use middleware & GUI applications, for seamless integration into existing IT infrastructures and systems
- Internal floor mounting holes and small footprint
- Integrated digital I/Os and power supplies
- Rotating antennas for directional tag interrogation
- Movable antennas in horizontal and vertical axes
- Special design for enhanced RF footprint.

H-BEP-0030 Industrial RFID Portal

Optional Features

- Signals: Light stack, horn for sound alarm
- Communications: WiFi connectivity
- Sensors: Presence & limit sensors
- Protection: Metal bumpers on the base of the portal



Technical Specifications

- Ext Dimensions (HxLxW): 200 x 50 x 30 cm (standard)
- Power Requirements: 220V AC, 1A, 50Hz
- Internal Power Supply: 12V DC, 2A (optional)
- Operating Temperature: -20°C to +50°C
- RFID reader: Alien ALR-8800 Enterprise RFID Reader, EPC Gen 2, ETSI compliant
- Antennas: ALR-8610-AC circular polarized, 5.5 dBiL
- Communications: Serial (RS-232), Ethernet LAN (DHCP, TCP/IP)
- General Purpose I/Os: 4 Inputs - 24V max, 8 Outputs optical isolated – 0,5A max.



Business Effect SA

Marathonos Av. & Ag. Athanasiou Str.
145 69 Anixi, Athens, GREECE
Tel: (+30) 210 8144474 – Fax: (+30) 210 8144475

www.businessesffect.gr